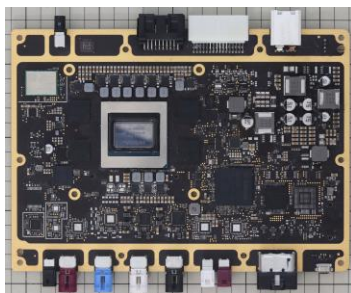


## ADAS ECU : NVIDIA DRIVE AGX Thor (Xiaomi SU7) Analysis Report



Xiaomi YU7



ADAS ECU Overview



SoC: nVIDIA Thor

### Report Overview

The Xiaomi YU7 adopts China's latest-generation ADAS platform, integrating LiDAR, 4D millimeter-wave radar, eleven cameras, and twelve ultrasonic sensors. It features a highly integrated architecture that combines the ADAS ECU, communication module, and domain controller into a single unit.

Two configurations of the ADAS ECU equipped with NVIDIA SoCs have been confirmed for this vehicle:

- **Orin (254 TOPS) x2 configuration** : Analysis report (25G-0523-1) already released
- **Thor (700 TOPS) x1 configuration**

Among these two configurations, this report focuses on the **higher-performance NVIDIA DRIVE AGX Thor-equipped ADAS ECU**.

The objective of this report is to provide a detailed analysis of the ADAS board, with emphasis on the system architecture and the integrated Thor SoC.

### Product Feature

**[Equipped Functions]** Forward Collision Warning, Automatic Emergency Braking, Lane Keeping Assist, Lane Centering, Full-speed Adaptive Cruise Control, Lane Change Assist, Parking Assist, 360° Surround View, Automated Parking, and other low-speed and parking-related assistance functions.

**[Equipped Sensors]** LiDAR (1 unit), Cameras (11 units), 4D Millimeter-wave Radar (1 unit), Ultrasonic Sensors (12 units)

\*) NVIDIA DRIVE AGX Thor: 10-layer build-up PCB structure with approximately 4,000 terminals.

Continue to next page

## Report Contents

### 1. Drive Board System Diagram Report Price:

- Component investigation (including comparison with Orin configuration)
- Estimated functional block diagram

Delivered **3 weeks** after project approval

### 2. NVIDIA DRIVE AGX Thor Chip Analysis Price:

- Installed memory capacity
- Logic gate length
- Die stacking structure
- Process technology
- Estimated functional block diagram

Delivered **2 months** after project approval

### 3. NVIDIA DRIVE AGX Thor Package Substrate Plan-view Analysis Price:

- Layer-by-layer routing layout
- Connectivity information
- Routing patterns
- CAD data (Gerber, ODB++, etc.)

Delivered **1 month** after project approval